

MOUNT SINAI HOSPITAL
PSYCHIATRY RESIDENCY
INCOMING RESIDENTS, 2013



Physician-Scientist Research Track

Drew Kiraly, MD, PhD

UNDERGRADUATE: Drew University, BA in Neurobiology, *Magna*

GRADUATE: PhD in Neuroscience, University of Connecticut School of Medicine

MEDICAL: University of Connecticut School of Medicine

A four-year college Presidential Scholar, member of multiple honor societies, and president of various undergraduate societies, Drew also played varsity lacrosse. He began his research career studying synaptic serotonin in SERT knockout mice, and soon moved to work with Dr. Jane Taylor at Yale, investigating animal models of drug addiction, chronic stress, and depression. He has received numerous awards for his research, including the Outstanding Scientific Presentation at the UConn Annual Neuroscience Symposium, and he was chosen as a supported fellow on a Department of Neuroscience NIH training grant for 2 years. To support his further doctoral work, Drew received a very prestigious F30 grant from the National Institutes on Drug Abuse for his proposed study of the roles of Kalirin-7 and the nucleus accumbens in cocaine-signaling. Attempting to understand why the loss of one single gene affecting the organization of the actin cytoskeleton had the effects it did on anxiety-like behavior, fear conditioning, and sensitization to cocaine, Drew completed his doctoral dissertation in lab of Dr. Betty Eipper, characterizing the PSD-localized Rho-GEF Kalirin-7 in the mouse brain and investigating its role in learning and addictive-like behaviors, as well as neuronal morphology and NMDA receptor signaling. Using Kalirin-7 knockout mice (Kal7KO), experiments included modeling of cocaine abuse, contextual learning, anxiety, and characterization of dendritic spine changes before and after cocaine treatment. He determined a direct interaction between the Kalirin-7 protein and the NR2B subunit of the NMDA receptor which was critical for the behavioral abnormalities and NMDA receptor trafficking seen in the Kal7KO mice. His post-dissertation ongoing work includes investigating cocaine self-administration behaviors in Kalirin-7 knockout mice, quantitative phosphorylation changes in Kalirin-7 from mice treated with acute or chronic cocaine or amphetamine, and breeding floxed Kalirin-7 conditional knockout mice with mice expressing Cre-recombinase under control of the Dopamine-1 receptor or Dopamine-2 receptor promoter. Comprising his 15 published peer-reviewed journal articles, Drew has first author papers in *Biological Psychiatry*, *Journal of Neuroscience*, *Journal of Proteome Research*, and *ACS Chemical Neuroscience*. He has co-authored papers in *Biological Psychiatry*, *Psychopharmacology*, *BMC Neuroscience*, *Psychopharmacology*, *Journal of Neuroscience*, *Genes, Brain & Behavior*, *Molecular Pharmacology*, and *RNA*. He has presented his work at numerous national conferences, including many years' of posters at Society for Neuroscience. Not only is Drew an accomplished researcher, he is an outstanding teacher and public speaker. During his PhD training years, he was repeatedly selected to speak at sessions designed to attract new students, and several of his protégés have since transferred their career paths to neuroscience.

MOUNT SINAI HOSPITAL
PSYCHIATRY RESIDENCY
INCOMING RESIDENTS, 2013



Physician-Scientist Research Track

Kenechi Ejebe, MD

UNDERGRADUATE: Carleton College, BA in Biology

MEDICAL: George Washington University School of Medicine

Born in Enugu, Nigeria to a professor and a judge, Kenechi immigrated to Plymouth, Minnesota when he was 8 years old. Despite first learning English through ESL classes, he eventually went on to compete in speech and debate tournaments in high school, and he has since excelled in academic pursuits and leadership. During college summers, Kenechi worked on an independent research project funded by the National Science Foundation, examining the genetics of legume inflorescence architecture. He was awarded the Larson International Fellowship during his junior year and traveled to Southern China and Hong Kong to investigate how traditional dietary systems play a role in culture. As a college senior, he earned first-place honors at the Harvard World Model UN Conference in Belo Horizonte, Brazil, and he was selected to be Carleton College's Class of 2002 Commencement Speaker. After college, Kenechi spent 2 years as an Intramural Training Award Fellow at NIH where he characterized the function of a critical enzyme in HIV, publishing his work in the *Journal of Virology*. In medical school, Kenechi enrolled in the Global Health Track and spent his first summer as an intern at the World Health Organization in Geneva, Switzerland. There he worked with the Prevention of Mother-to-Child Transmission of HIV/AIDS team to develop guidelines for baseline assessment and implementation of programs to prevent HIV infections in infants and young children. At GW med school, he served as the chapter co-Leader of Physicians for Human Rights and organized a healthcare disparities conference featuring former Health & Human Services Secretary Dr. Louis Sullivan as keynote speaker. He was co-President of the GW chapter of the Student National Medical Association for 2 years and on SNMA's national Board of Directors for 1 year. He chaired the International Health Committee and coordinated international medical missions to Kenya and Guatemala. These and other accomplishments led to Kenechi's selection as an AMA Minority Scholar; he was 1 of 10 students in the country to receive this \$10,000 prize. After his third year of medical school, Kenechi was awarded a Sarnoff Cardiovascular Research Fellowship, and spent a year at Massachusetts General Hospital where he conducted a genome-wide association study testing single nucleotide polymorphisms for association to several phenotypes in approximately 8,000 African-American patients. He has co-authored papers in *Nature* (x2), *Nature Genetics*, *PLoS Genetics* (x2), and *Human Genetics*. For part of the past year, Kenechi worked in Mount Sinai's Division of Psychiatric Genomics where, under Pamela Sklar, he worked to establish disease models for schizophrenia using human induced pluripotent cells and investigated candidate genes of interest for follow-up work from genome-wide association studies.

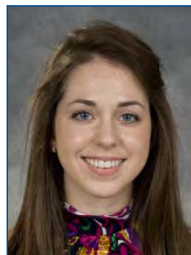
MOUNT SINAI HOSPITAL
PSYCHIATRY RESIDENCY
INCOMING RESIDENTS, 2013



Jesse Astwood, MD

UNDERGRADUATE: CUNY Brooklyn College, BA in History, Phi Beta Kappa
MEDICAL: SUNY Downstate College of Medicine

Jesse entered medical school through the highly competitive CUNY/SUNY combined BA/MD program, where his adept curiosity led to his graduating medical school in the top of his class. With interests and activities ranging from gardening, cooking, and media analysis to paleontology, criminology, and sociobiology, he has written on the psychopathology inherent in superhero and apocalyptic stories. He also has dissected and reconstructed whale and other marine mammal skeletons in Mount Sinai's evolutionary biology laboratory. He has been responsible for a culinary after-school program for at-risk inner city high school kids, post-produced animated films, and made his way as a weekly humor columnist.



Claire Brandon, MD

UNDERGRADUATE: Capital University, BA in Biology, *Summa*
MEDICAL: Wright State University School of Medicine

Winning an aptly named Human Development Award early in her training, Claire was elected President of her school's American Medical Women's Association, Officer of the American Medical Association, Committee Chair of the American Medical Student Association, and four-times re-elected as the rep to the Honor Code Committee. She has studied the attitudes of residents in various specialties toward borderline personality disorder with an aim to identify possible education deficits in training, and she has written CME teaching tools in peer-reviewed online indexes. She has also published findings on the various aspects of genetically-modified foods in the US and Latin America, noting inappropriate labeling on commonly consumed products. A lifelong musician, she has served as her congregation's head violinist for nearly a decade.



Judy Burke, MD

UNDERGRADUATE: Bryn Mawr College, BA in Music
MEDICAL: SUNY Downstate College of Medicine

Graduating with a degree in music, Judy found a career path first working at the US Department of State as an IT consultant, then as an online programmer, then spending a number of years supporting daily operations of multiple small construction subcontractors, and finally owning and operating a small eponymous construction-subcontracting firm which performed demolition and concrete installation projects. Judy subsequently entered medical school in the four-year Clinical Neurosciences Pathway, where she assumed ongoing leadership as a multi-year president of the psychiatry student interest group, regional chair of PsychSIGN, and three-year editor of the student literary and arts publication. Pursuing her interest in geriatric psychiatry, she has studied the impact of changes in home care delivery systems on caregiver burden and patients' neuropsychiatric symptoms. Judy has played violin in many small orchestras, and for over a decade has played fiddle in a country rock band.

MOUNT SINAI HOSPITAL
PSYCHIATRY RESIDENCY
INCOMING RESIDENTS, 2013



Kara Gulewicz, MD, MA

UNDERGRADUATE: Cornell University, BA in Neurobiology, *Magna*

MEDICAL: Combined MA/MD, Washington University in St. Louis School of Medicine

Receiving honors in nearly every course throughout medical school, Kara has a distinguished history of academic success, research, and writing. In college, she researched sleep and memory in humans, before turning her attention to female hamsters' behavior and neural activation: she wondered whether captivity could lead to inter-species mating. She published this work in *Behavioral Neuroscience* and the *Journal of Zoology*. Early in medical school, Kara published on alopecia produced by sustained signaling in follicle matrix cells. She later studied regulatory variants in atopic dermatitis, receiving a Masters Degree and publishing in the *Journal of Investigative Dermatology* and in the *Journal of Allergy and Clinical Immunology*. Kara was selected as a Theme Issue Editor for the AMA's Journal of Ethics, Virtual Mentor. She focused on how physicians can ethically approach patients' use of complementary and alternative medicine, eliciting contributions from skeptics and proponents, including Deepak Chopra and Skeptic magazine. She was recently invited to give a grand rounds presentation at Wash U on the nature of an expert witness.



Alfredo Gutierrez, MD

UNDERGRADUATE: Rice University, BA in Psychology

MEDICAL: Baylor College of Medicine

Alfredo has a longstanding record of leadership, community service, working with underserved populations, and facilitating student wellness. In addition to his role with the College Assistance Peer Program helping students with mental, emotional, and health issues, he has held executive positions in the Hispanic Association for Cultural Enrichment at Rice and the Latino Medical Student Association (LMSA) at Baylor. He helped construct a women's resource center in Guatemala, and as 1 of 10 students awarded a fellowship by the Center for Civic Engagement at Rice, he worked for the Amazon Community and Indigenous Health Program in Ecuador. Between college and medical school, Alfredo worked full-time at the Children's Nutrition Research Center, analyzing the effects of a school-based weight management program on Hispanic middle school students. He elaborated upon this work and developed a manual to assist elementary schools in incorporating health intervention programs. As a medical student, Alfredo participated in Baylor's Underserved Community Track and created informational videos on STIs and contraception for the Baylor Teen Health Clinic. He is fluent in Spanish.

MOUNT SINAI HOSPITAL
PSYCHIATRY RESIDENCY
INCOMING RESIDENTS, 2013



Theresa Mauro, MD

UNDERGRADUATE: Canisius College, BS in Biology, *Summa*
MEDICAL: Georgetown University School of Medicine

In college, Theresa was recognized as the top student in biology. Long interested in developing systems to provide care to the underserved, she led a co-ed international business fraternity, cultivating a lasting partnership with the local community to provide mentors for underserved children. She has worked in drug and alcohol rehabilitation for adolescents, developed relaxation training for girls aging out of foster care, and presented at Washington D.C.'s National Summit of Clinicians for Healthcare Justice as well as the Annual Conference on Intercultural Relations. Bringing her interests to bear on delivery of mental health services, she has examined how cultural beliefs contribute to mental health help-seeking disparities among racially and ethnically diverse youth, with a goal to eventually implement programs to meet the needs of these populations. Also an outstanding clinician, her recorded clinical exams in medical school were chosen as a model for training upcoming students. Throughout her studies, Theresa has been employed as a science tutor, a physical therapy technician, and a manager at Starbucks.



Travis Meadows, MD

UNDERGRADUATE: Emory University, BA in Chemistry and Women's Studies
MEDICAL: Medical University of South Carolina School of Medicine

Travis graduated early from Emory, where he was recognized as one of the top 25 students who demonstrated promise for the future. He received multiple service awards for his work with students in the community as well as for leadership of his peers, and he was nominated to be Emory's NAACP Man of the Year. In medical school, Travis continued to excel as a leader and was selected as a Presidential Scholar for his commitment to interdisciplinary discussion and collaboration exploring complex social, political, and humanitarian issues. Travis was a peer mentor in MUSC's Office of Diversity, a mentor to male African-American high school and college students interested in careers in medicine, and he served as a faculty advisor for 25 high school students enrolled in the intensive National Youth Leadership Forum on Medicine. As a senior medical student, Travis was selected to for an elective in Psychiatry at Mount Sinai, sponsored by the Visiting Elective Program for Students Underrepresented in Medicine (VEPSUM). He was also awarded the American Psychiatric Association Minority Student Travel Award.



Justin Meyer, MD

UNDERGRADUATE: Boston University, BA in Biology and Psychology, *Magna*
MEDICAL: State University of New York Upstate Medical University

Graduating medical school in the top of his class, Justin has been recognized for excellence in clinical care, leadership, compassion, and a dedication to service that has been lauded by both his faculty and peers. He was elected to the Gold Humanism Honor Society, received multiple Dean's Letters of Commendation for his academic work, was chosen to represent medical students' interests at the LCME Student Self Study Committee for AAMC accreditation, and was chosen as a Resident Assistant to counsel peers with academic or social issues. He held executive positions in the Psychiatry Interest Group and the Student Interest Group in Neurology, and he worked to ignite local high school students' interest in the brain. He tutored extensively in Biochemistry, Microbiology, Pharmacology, and Pathology. Faculty members have noted that they would choose him to treat their loved ones.

MOUNT SINAI HOSPITAL
PSYCHIATRY RESIDENCY
INCOMING RESIDENTS, 2013



Katherine Pier, MD

UNDERGRADUATE: University of Pennsylvania, BA in Psychology, *Summa*

MEDICAL: Icahn School of Medicine at Mount Sinai

An active teacher, organizer, leader, and writer, Kate entered Mount Sinai through the Humanities and Medicine Program. As Editor-in-Chief of Mount Sinai's art and literature magazine, she reinvigorated readership and funding. She helped pioneer Mount Sinai's first production of *Vagina Monologues* and organized fundraising for antiviolence/anti-abuse campaigns. She has been a mentor to first-year students, a tutor/TA in six classes, and a weekly seminar leader in Art and Science of Medicine. As president of the psychiatry student interest group, she devised a highly attended event featuring psychiatry, cosmetic plastic surgery, and cosmetic dermatology, and she is now investigating the prevalence of body dysmorphic disorder in patients undergoing cosmetic procedures. Working in Eric Nestler's lab, she presented findings on ketamine as a novel antidepressant for stress-induced pathology in mice, and she published a first author case report in the *American Journal of Geriatric Psychiatry* on ECT for depression misdiagnosed as dementia. Kate lived in Argentina for a year before medical school, working in sales and designing ESL classes for orphans in Buenos Aires.



Rishi Sawhney, MD

UNDERGRADUATE: University of Texas Austin, BA in Finance

MEDICAL: Baylor College of Medicine

Rishi has excelled in service and leadership. He was president of the UT chapter of Circle K International, for which he won the Most Outstanding President Award and his chapter the Most Outstanding Chapter Award, for the Texas-Oklahoma district. He created an alliance between Texas School for the Deaf and schools for the deaf in Mali, which included winning a funding grant from the Clinton Global Initiative. He further bridged his healthcare and business knowledge while interning at Gerson Lehrman Group. In medical school, Rishi founded and was co-president of Primary Care Progress, recruiting faculty members, receiving grants, and connecting students with quality improvement projects across the city. He was class rep for 3 years and delegate to the AMA. He served as Region 3 (TX, OK, KA, LA, AK, MS) Chair for the AMA's annual conference and as Vice Chair of a National Standing Coordination Committee. He worked to develop the curriculum for Baylor's Medicine and Management Elective as well as a series of lectures for students on psychiatry clerkships, and he has been mentor to a dozen first year students. Rishi has researched the relationship between testosterone/cortisol levels and motivation/actions in game theory experiments.

MOUNT SINAI HOSPITAL
PSYCHIATRY RESIDENCY
INCOMING RESIDENTS, 2013



Kevin Zhang, MD

UNDERGRADUATE: University of Southern California, BA in Biology

MEDICAL: Baylor College of Medicine

Moving from China to the US at 5, Kevin grew up in New Mexico, Minnesota, and numerous points in between. In college, he was named a Renaissance Scholar for his ability to excel in widely different academic realms. He evaluated progenitor cell retinal transplantation in rats and published his work in the *Journal of Neuroscience Methods*. His faculty and peers chose him to develop a supplemental curriculum to the core physics course at USC, and he taught 4 sessions per week for 150 students. He also taught physics to gifted high school students and nutrition to underserved middle schoolers. He co-founded an organization to coordinate a healthcare trip to El Salvador and created a lasting USC presence in the country; the organization eventually involved over 22 members per year. He has spent summers in the Middle East, China, and Thailand to gain a greater understanding of global affairs. Fluent in Chinese, he rotated in internal medicine at Jiao Tong University's Hospital in Shanghai. Awarded a merit scholarship to Baylor, Kevin continued his record of excellence on varied fronts, including completing research leading to publications in the *American Journal of Ophthalmology*, *Cornea*, *Journal of Glaucoma*, and *Dermatology Online*. He enjoys writing music and has developed a psychology and relationships social network site.



Rachel Zhuk, MD

UNDERGRADUATE: Stanford University, BA in Philosophy

MEDICAL: Icahn School of Medicine at Mount Sinai

Rachel is a leader with a commitment to caring for vulnerable populations. She planned and co-led trainings in group communication and leadership for Palestinian, Israeli, and American teenage women, later translating her experiences into a novel course she created at Stanford. After college, she worked in healthcare policy at the National Center for Children in Poverty where she examined public assistance programs, presenting her work to advocates and policy-makers. In medical school, she was one of 12 students competitively selected for a longitudinal ambulatory care rotation spanning the 3rd year. This experience informed further leadership work in Mount Sinai's student-run free clinic in which she was a teaching senior, co-coordinator for HIV testing, and one of the student founders of the rapid HIV testing program. She created and delivered HIV counseling training to students and managed staffing, materials, and interface with the general clinic during the program's first year. She has presented scholarly work related to the clinic at Medicine Grand Rounds and nationally at the annual meeting of the Society for General Internal Medicine. She has also been an active leader in advancing medical students' knowledge of complementary and alternative medicine. She has researched CAM's role in palliative care for children with cancer and has contributed to Mount Sinai's recently accepted application to the Consortium of Academic Health Centers for Integrative Medicine. She was the president of Students for Integrative Medicine and the curriculum director of an AMSA-sponsored rotation in Alternative Medicine. She is a yoga instructor and has studied traditional Chinese medicine at the Yunnan Provincial Chinese Medicine Hospital.

MOUNT SINAI HOSPITAL
PSYCHIATRY RESIDENCY
INCOMING RESIDENTS, 2013



Incoming PGY-2

Kimberly Schreiber, MD

UNDERGRADUATE: Loyola University, BA in Psychology, *Cum Laude*

MEDICAL: Loyola University College of Medicine

INTERNSHIP AND RESIDENCY: Obstetrics and Gynecology at Lenox Hill Hospital

Kimberly comes to us having completed 2 years of an Ob-Gyn residency. Kim was born and raised in Chicago, and took an early interest in studying the mind, writing her honors thesis on adolescent conduct disorder and ameliorative parental behavior training. After several years of full-time cancer research followed by volunteering in the far reaches of Appalachia, she worked full-time for 4 years as a counselor in an inpatient psychiatric unit, initially with geriatric patients and then with acutely ill adults. She ran group therapies, mastered crisis-intervention techniques for use with violent patients, and served as a task force representative to improve patient care. She was subsequently awarded a Harvard internship to train in aging-related research, and she soon published work on delirium (*Journal of Clinical Outcomes Management*) and on postoperative cognitive decline after cardiac surgery (*Acta Anaesthesiologica Scandinavica*). In her clinical clerkships, she experienced an unforeseen passion for obstetrics and pursued an Ob-Gyn residency with a goal to provide a psychiatrically-informed approach to women's health. However, practicing psychiatry persisted as an unmet aspiration, and it is our good fortune that she's now returning to her longstanding interest in mental health care.